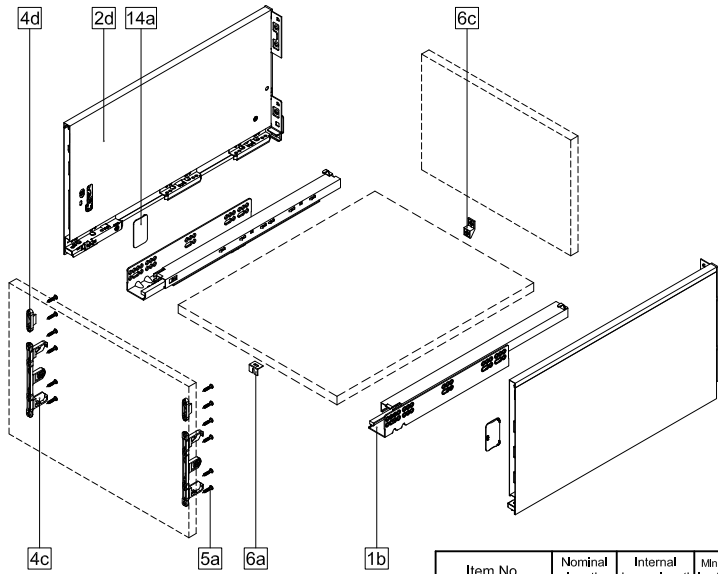


Montaje / Assembly / Montaggio / Montage/ Montagem

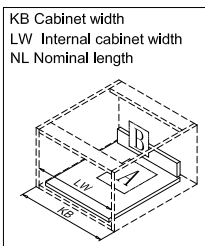
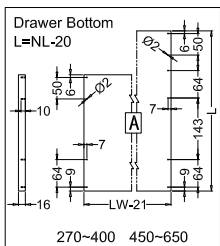
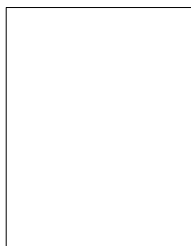
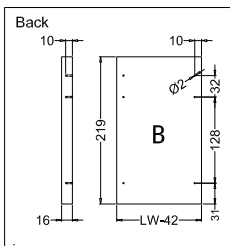
Componentes / Components / componenti / Composants / Componentes



1b. Cabinet profiles L/R	5a. Front fixing-brackets screw (Ø4x17)
2d. 249 Drawer Sides L/R	6a. Front fixing (for wide drawer)
4c. 185 Front fixing-brackets	6c. Back fixing (for wide drawer)
4d. 249 Front fixing-brackets	14a. Side cover plate

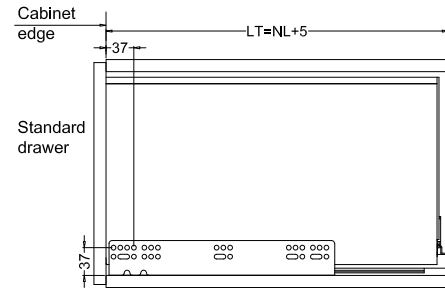
Item No.	Nominal length	Internal drawer length	Min. installation length of drawer
270	270 mm	244mm	275mm
300	300mm	274mm	305mm
350	350 mm	324mm	355mm
400	400 mm	374mm	405mm
450	450 mm	424mm	455mm
500	500 mm	474mm	505mm
550	550 mm	524mm	555mm
600	600 mm	574mm	605mm
650	650 mm	624mm	655mm

Dimensiones del fondo y la parte trasera del cajón Drawer back and bottom dimensions



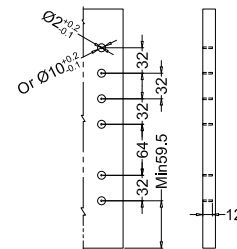
Dimensiones de instalación (mm) Installation dimensions (mm)

Nominal slide length=NL Internal cabinet depth=LT



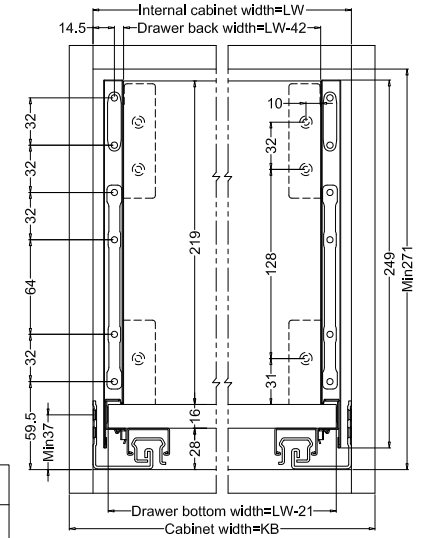
Dimensiones de instalación del cajón. (mm) Drawer installation dimensions. (mm)

Frete del cajón
Drawer front

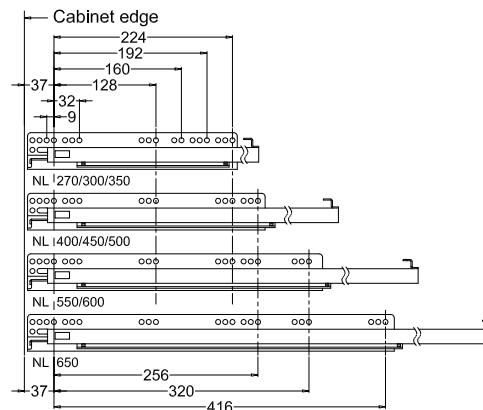


Selection	Drill Size
Wood screw	Ø2 x 12
Anchor bolt	Ø10 x 12

Dimensiones de instalación del cajón. (mm) Drawer installation dimensions. (mm)

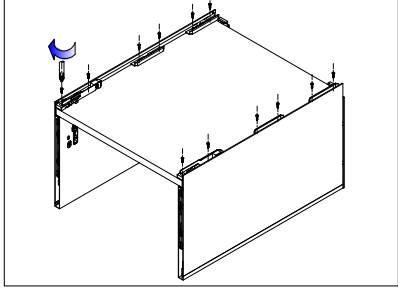


Posiciones de los tornillos Screw positions of the sides.

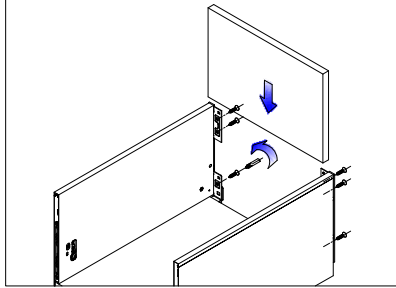


Montaje / Assembly / Montaggio / Montage/ Montagem

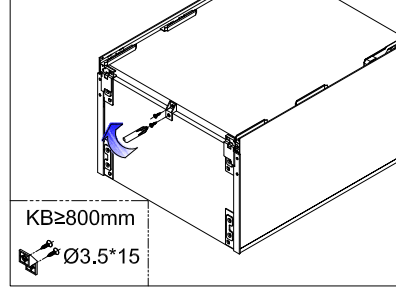
Ensamblaje / Assembly



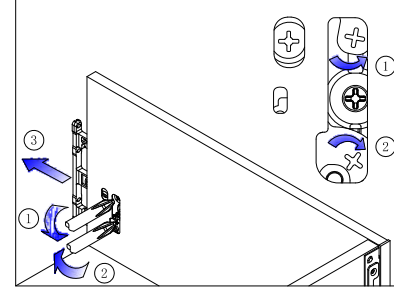
Ensamblaje inferior
Bottom assembly



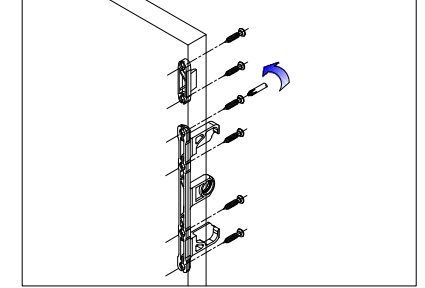
Montaje trasero
Back assembly



Conjunto de fijación trasera
Back fixing assembly

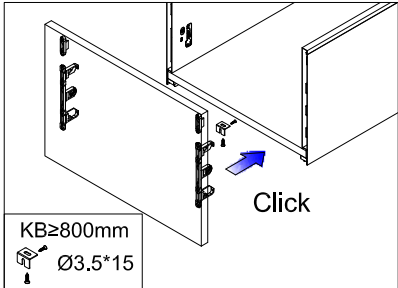


Liberación del soporte frontal
Front bracket release

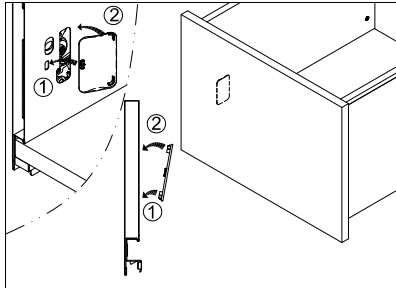


Montaje soporte frontal
Front bracket assembly

Ensamblaje / Assembly

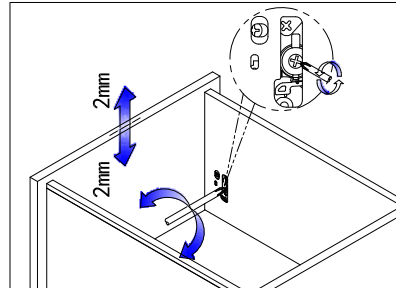


Montaje frontal
Front assembly

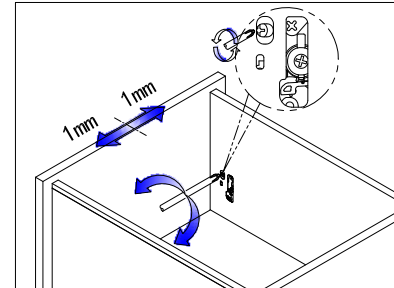


Instalación de la tapa embellecedora
Inside wall cover assembly

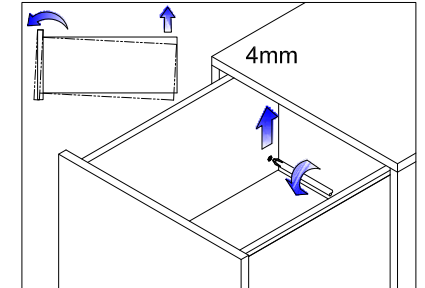
Regulaciones / Adjustment



Ajuste hacia arriba y hacia abajo
Up & down adjustment

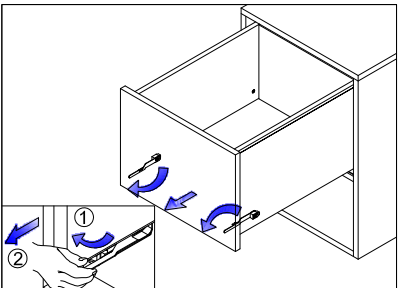


Ajuste derecha e izquierda
Left & right adjustment

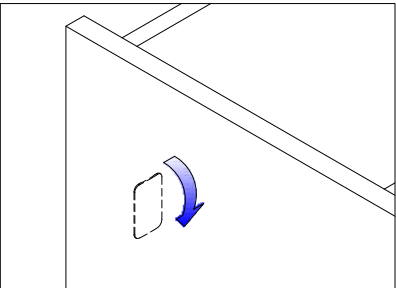


Ajuste del ángulo de pendiente frontal
Front slope angle adjustment

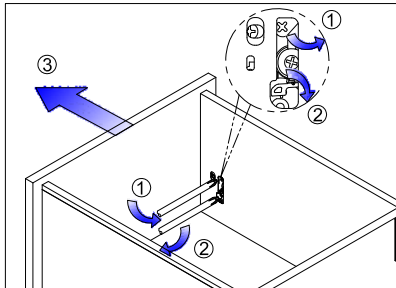
Desensamblar / Removal



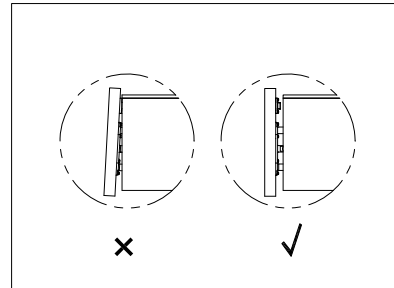
Extraer cajón
Removal drawer



Incline la tapa y tire hacia afuera.
Tip up the cover and pull out



Para desmontar el cajón
Removal drawer front



Mueva el frente del cajón hacia afuera horizontalmente.
Move the drawer front out horizontally

